

Name: _____

Date: _____

Geometry Homework 2/3 to 2/11 (Period 2 and 3)
2/4 to 2/10 (Period 7)

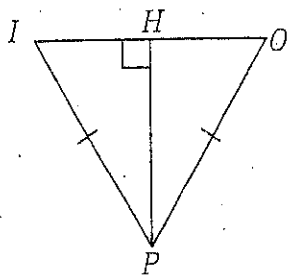
Homework Help:

- Step Up
- SUN School Tutoring in the library
- Afterschool Wednesday and Thursday with Mr. Cha
- Mr. Cha's website: mrcha.weebly.com

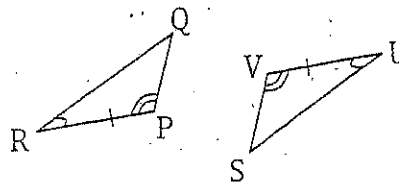
1. Draw an example of each triangle congruency conjectures

a. $SAS \cong$	b. $SSS \cong$
c. $ASA \cong$	d. $HL \cong$
e. $AAS \cong$	

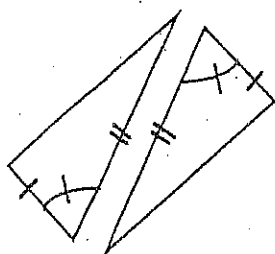
2. For each pair of triangles, decide whether they are congruent or not congruent. If the triangles are congruent, state the congruence conjecture (no flowchart). I



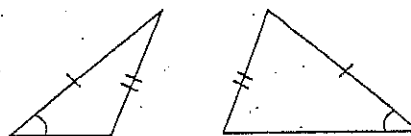
YES or NO Conjecture: _____



YES or NO Conjecture: _____

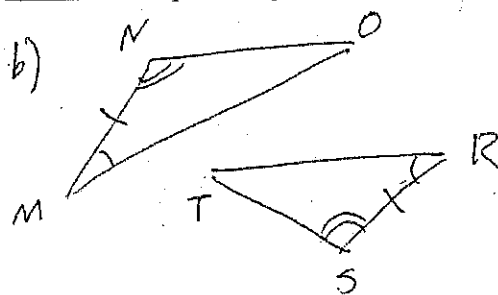
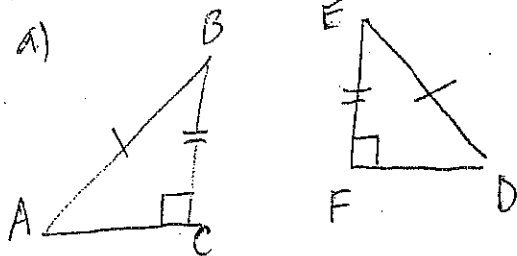


YES or NO Conjecture: _____



YES or NO Conjecture: _____

3. The pairs of triangles below are congruent. Name all the other corresponding parts that are congruent.



4. For each pair of triangles, prove the triangles are congruent using a *flowchart* proof.

