

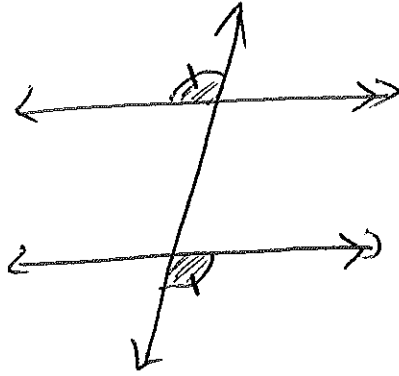
More Angle Relationships

10/15

ES:

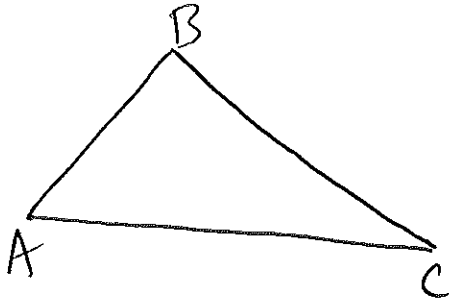
What about exterior angles and angles inside a triangle?

Alternate Exterior Angles



They are outside the parallel lines. ~~and~~ one angle is on the left and the other is on the right of the transversal. * They are congruent.

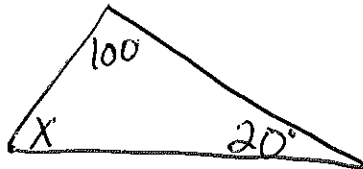
Triangle Angle Sum Theorem



The measures of the angles in a triangle adds up to 180°

$$m\angle A + m\angle B + m\angle C = 180^\circ$$

(ex)



$$X + 20 + 100 = 180$$

$$X + 120 = 180$$

$$\begin{array}{r} -120 \quad -120 \\ \hline \end{array}$$

$$X = 60^\circ$$

Summary