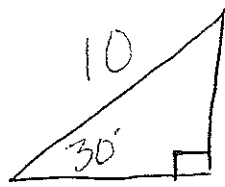


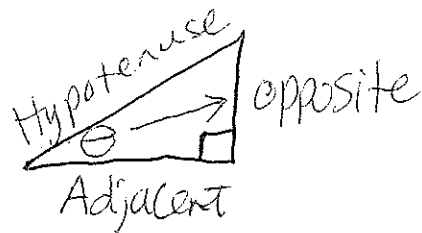
Sine and Cosine Ratios

12/10

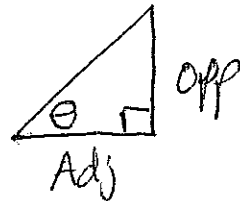
Can we use the tangent ratio here?



NO, we cannot use the tangent ratio because we do not know Δy and Δx .



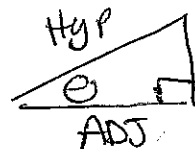
$$\tan \theta = \frac{\text{OPP}}{\text{Adj}}$$



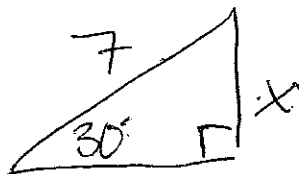
$$\sin \theta = \frac{\text{OPP}}{\text{HYP}}$$



$$\cos \theta = \frac{\text{ADJ}}{\text{HYP}}$$



ex
sine

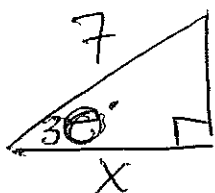


$$\textcircled{7} \sin 30 = \frac{x}{\textcircled{7}}$$

$$7 \cdot \sin 30 = x$$

$$\textcircled{3.5 = x}$$

ex
cos



$$\textcircled{7} \cos 30 = \frac{x}{\textcircled{7}}$$

$$7 \cdot \cos 30 = x$$

(6.06 = x)