

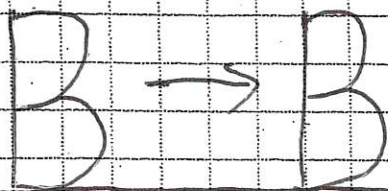
ES: What are the 4 types of Transformations?

① Reflection - Flip

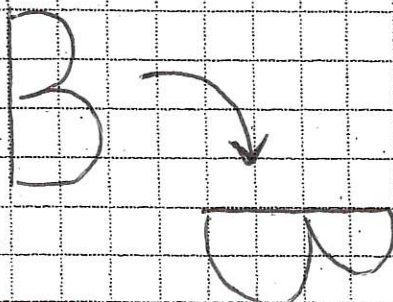


"opposite"

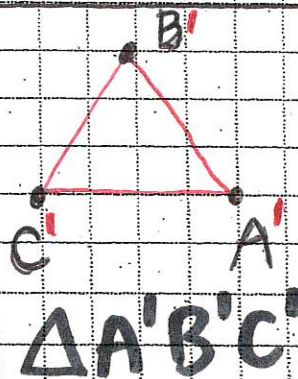
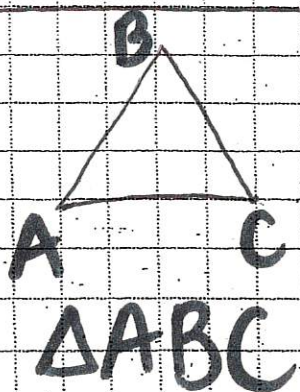
② Translation - slide



③ Rotation - turn



Notation:
Labeling

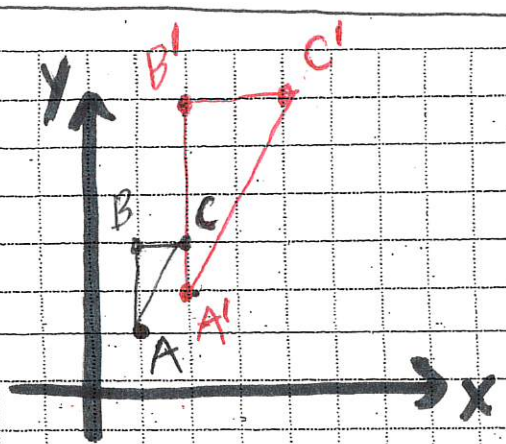


Dilation

What is it? It is a transformation that stretch or shrink the image by multiplying its dimension.

ex1

Dilate by a factor of 2



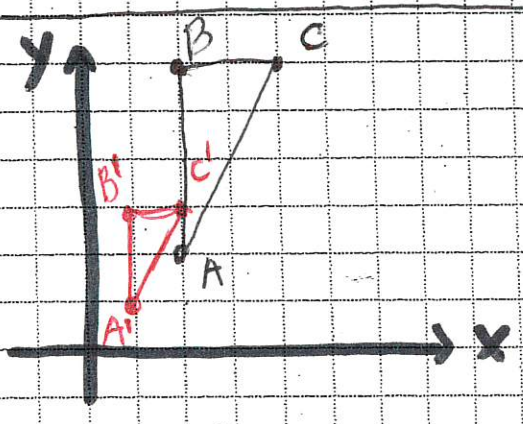
$$A(1,1) \xrightarrow{\times 2} A'(2,2)$$

$$B(1,3) \xrightarrow{\times 2} B'(2,6)$$

$$C(2,3) \xrightarrow{\times 2} C'(4,6)$$

ex2

Dilate by a factor of $\frac{1}{2}$



$$A(2,2) \xrightarrow{\times \frac{1}{2}} A'(1,1)$$

$$B(2,6) \xrightarrow{\times \frac{1}{2}} B'(1,3)$$

$$C(4,6) \xrightarrow{\times \frac{1}{2}} C'(2,3)$$

Summary