

# Triangle Congruence Conjectures

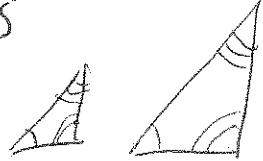
SSS  $\cong$

If all 3 pairs of corresponding sides have equal length, then  $\cong$ .



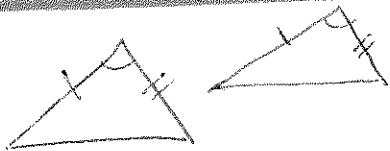
AAA  $\sim$

NOT congruent, only similar



SAS  $\cong$

If two pairs of corresponding sides have equal lengths and the angle between them are equal, then  $\cong$ .



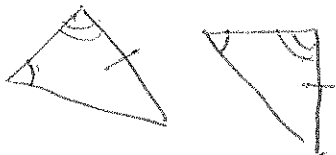
ASA  $\cong$

If two angles and the side between them are congruent to the corresponding angles and the side, then  $\cong$ .



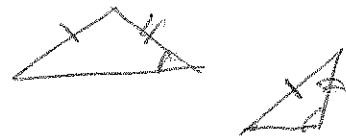
AAS  $\cong$

If two pairs of corresponding angles and a pair of corresponding sides that are not between the angles, have equal measures, then  $\cong$ .

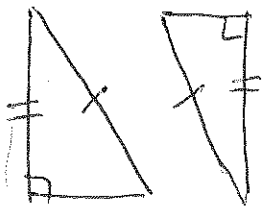


SSA

NOT congruent and similar



HL  $\cong$



If the hyp. and a leg of a RTA have the same lengths as the hyp. and a leg of another RTA, then  $\cong$ .