

# Triangle Similarity Conjectures

10/26

SSS ~  
Side-Side-Side

All three corresponding side lengths share a common ratio (proportional).

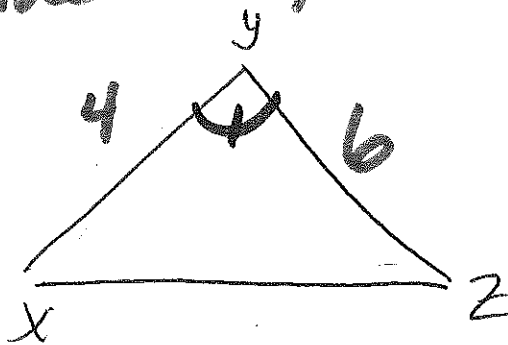
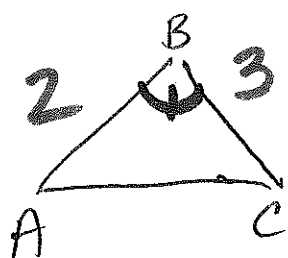
AA ~  
Angle-Angle

Two pairs of corresponding angles have equal measures.

SAS ~  
Side-Angle-Side

Two pairs of corresponding side lengths have equal ratios and a pair of corresponding angles are equal. The angle is between the two side lengths.

(ex)



$$\frac{2}{4} = .5$$

$$4B = 4Y$$

$$\frac{3}{6} = .5$$

$$\triangle ABC \sim \triangle XYZ$$

by SAS ~

Summary