

Zoom Factor

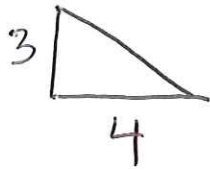
11/23

ES:

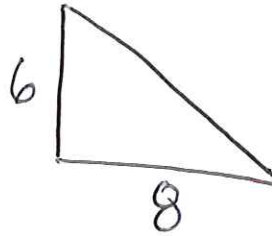
What is a zoom factor? How do I use it?

Zoom factor is the amount each side of a figure is multiplied by when the figure is proportionally enlarged or reduced in size.

What is the zoom factor?



original



New

constant ratio
(same ratio)

The zoom factor is 2.

$$3 \cdot 2 = 6$$

$$4 \cdot 2 = 8$$